

Meadow Side



**A side to
Manchester
you weren't
expecting**



Contents

07—16

Built On Real Life

THE OVERVIEW

Get closer to living around the biggest green space in Manchester's city centre. Get closer to a 350 acre regeneration project and find out more about the local character and entrepreneurial spirit of this hard to put down side of the city.

17—34

Joined-Up Living

THE DEVELOPMENT

In the city and on the park. Full of life and open space. Loved by Lowry and locals alike. MeadowSide is a short walk from anywhere. With four distinctive residential buildings that come together to create joined-up living.

35—51

Where It's At

THE LOCATION

Manchester. A place of creative grit and guts. Where the independent scene opens a new door every day and street art splashes colour on the red brick walls. The centre of the Northern Powerhouse, with an average age of 29, 105,000 students and a super economy of £300 billion.

Built On
Real Life



ents



—
The Gate + The Stile
1, 2 and 3 bedroom apartments
and penthouses.

**MeadowSide is
an interesting
mix of apartments,
townhouses and
penthouses. Real life
living, in the city and
on the edge of the park.**

**Where all the best bits
live side-by-side.**



—
Lobby
A place to meet and be greeted. 24 hours a day.

Think Sideways

Take a place. One with history, character and a big grassy meadow. Then breathe new life into it. Give it purpose. Add a collection of different homes that appeal to different people and build them around the park. Where people can have a view. Feel the breeze and see the sky. Somewhere that's close to everywhere and a place in its own right. In a city known for its music, education, entrepreneurship and two of the world's greatest football clubs, Manchester United and Manchester City. MeadowSide is the first step towards the groundbreaking regeneration of the Northern Gateway, covering 350 acres which will accommodate over 10,000 new homes.



— **The Gate + The Stile**
City living on the edge of the park.

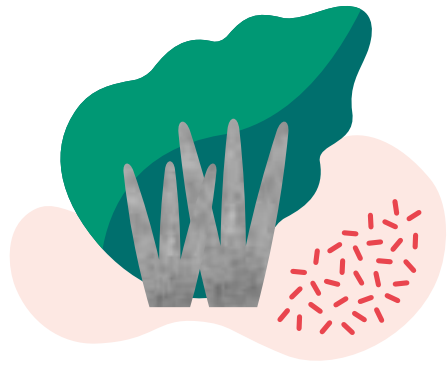


— **MeadowSide Living**
A breath of fresh air in the biggest green space in Manchester city centre.
Photograph by Jenn Evelyn-Ann.

An architectural rendering of a city park at dusk. The park features a central paved path, lush green lawns, and numerous trees. On the left, a multi-story brick building with balconies is visible. In the center, a large, curved glass building with a unique, angular roofline stands out. To the right, a tall, modern glass skyscraper is illuminated, reflecting the sunset. The sky is a mix of blue and orange, suggesting twilight. The overall scene depicts a vibrant, modern urban environment with a focus on green space and contemporary architecture.

**A Toe
in the City**

**A Foot
on the Earth**

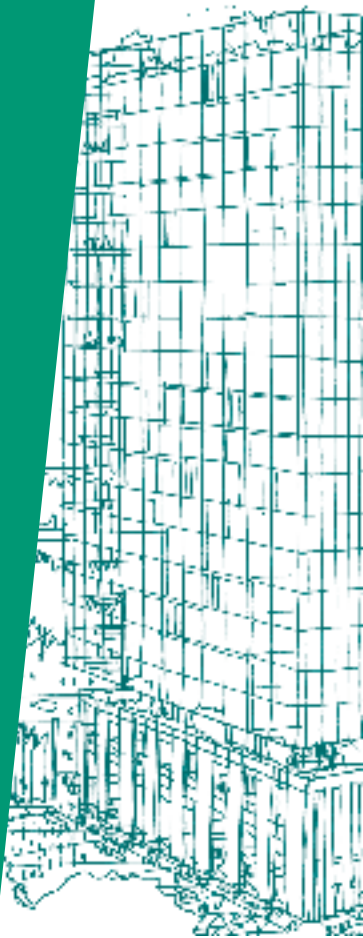


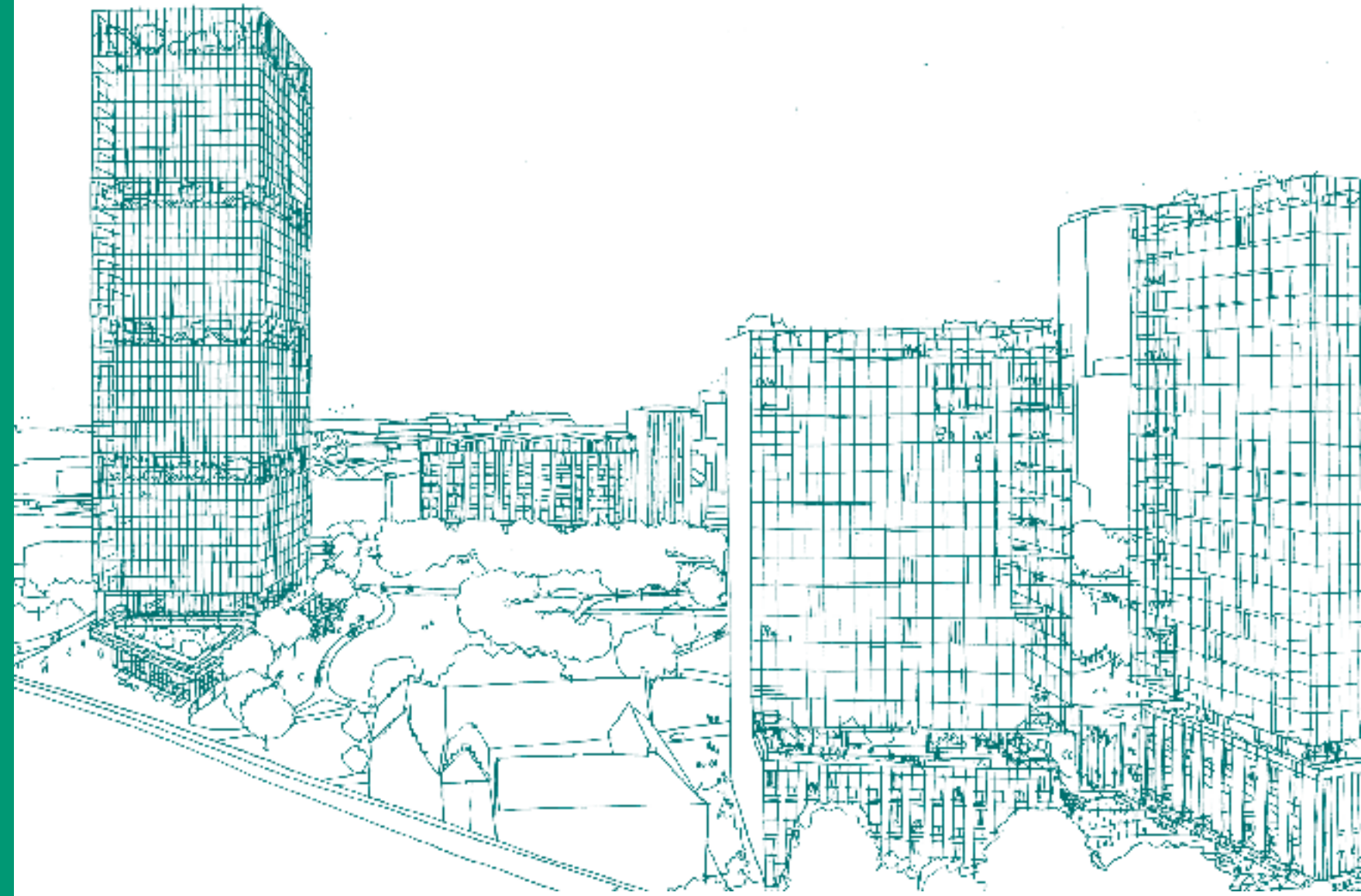
A creative and cultural part of the city that shifts and thrives and lights up.

Built on a piece of history. On a park that's served the community for centuries. In a creative and cultural part of the city that shifts and thrives and lights up. MeadowSide is a place with substance. A place with heart. Where everyone is invited and you still have space to breathe. An extension of NOMA, close to Ancoats and the Northern Quarter, it's a colourful spot with a healthy serving of Manchester soul.

At the development, residents will have a 24 hour concierge service. Allocated parking at an additional cost. A gym, private dining, shared workspaces and private communal terrace. Complimented by parkside living and local retailers selling their homemade goodness, including some of the best local breweries around.

Joined-Up Living





—
The Original Vision
The Peak will be a landmark building,
rising from the Manchester city centre skyline.

MeadowSide is a collection of four distinctive buildings. Of contrasting materials, elements and details. Of 756, one, two and three bedroom apartments, Penthouse Apartments and Townhouses that all appeal to different kinds of people. Which is the right kind of foundation for a proper sense of community and the right mix of character.

Set around the beautiful green space of Angel Meadow, each property has been built with the view in mind. The light is set to shine and the parkside location is a rare find in such a central location. MeadowSide will spearhead the regeneration of the Northern Gateway and breathe life into a part of the city that already has so much to offer. An area with history and heart. In the city and on the edge of the biggest green space in Manchester city centre. Where the surrounding areas can have

their influence and flourish in return. The first step in an ambitious regeneration project, MeadowSide is a catalyst for further growth. Designed to have a positive impact for many years to come.

MeadowSide

“The vision is to create spaces that are modern and comfortable.”

Jon Matthews, 5plus Architects.



— **Thoughtful Design**
Modern materials and Victorian influence.

MeadowSide

Sustainably designed, each building combines the colours and materials of the old and the new. Of the existing Victorian and industrial landscape with contemporary techniques, materials and structures. Glass butts up to red brick and existing steel, concrete and timber have been recycled in the landscaped gardens.

MeadowSide



—
Living Room
Light, airy and open.

MeadowSide



—
Bedroom
A room with a view.

MeadowSide



—
Kitchen
Beautifully designed spaces.

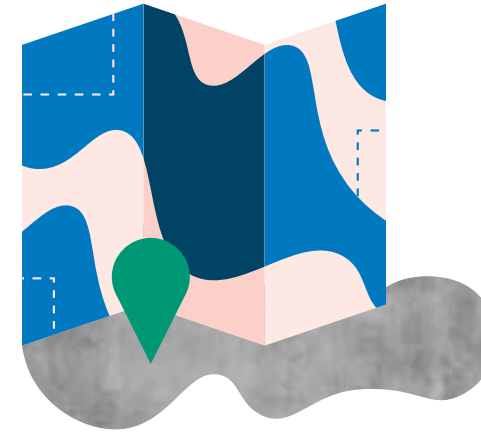
MeadowSide



—
Bathroom
Understated luxury.



—
An interesting mix
 Four distinctive designs, bringing together a collection of different people.



—
Pilcrow Pub
 A local made by locals.



—
Evelyn's Café Bar
 Asian flavours inspire the menu, created by Byron Moses.

Walking distance to anywhere that's anywhere.

With artisan coffee shops, boutiques, art spaces, independent record stores and endless bohemian bars, life is ready for the taking. Whenever you feel ready to take it. Or retreat to your room with a view. Because you can.

NOMA, the Northern Quarter, and Ancoats are all a heartbeat away.



Meet the Architect

Impactful design

The landscaped gardens will reach out beyond Angel Meadow.

Raw, reflective and beautiful.

A place of simplicity and elegance. Inspired by the engineering prowess of the Industrial Revolution that characterizes this special area of Manchester. The vision for MeadowSide is rooted in the park, the Victorian infrastructure and the opportunity for placemaking. A place that brings together different people, elements, materials and influences.

We interviewed **Jon Matthews** — Director of 5plus Architects — to discover more about his vision for the MeadowSide scheme...



Jon Matthews
Director of 5plus Architects.
Image supplied by 5plus.

MeadowSide: Please introduce yourself and tell us about the project.

Jon Matthews: My name is Jon Matthews, Director of 5plus Architects. We are a design studio servicing Architecture, Masterplanning, Interiors and Graphics projects from our studios in London and Manchester. MeadowSide is a residential-led regeneration project set around Angel Meadow Park in Manchester city centre.

MS: What is your role on the MeadowSide development?

JM: Our role is Lead Consultant, Architect and Interior Designer.

MS: Tell us more about your vision for the Angel Meadow redevelopment.

JM: Our vision was to design a series of complimentary residential buildings, which sit within a park setting, and compliment the existing Victorian structures and buildings to create a cohesive community. We paid specific attention to the ground floor condition, enhancing existing pedestrian connections and created new connections through the site to maximise interaction with the park and enhance connections to the city centre. This is both a piece of urban regeneration and an Architectural composition.

MS: What did you set out to achieve with the interior design?

JM: To create spaces that are modern, warm and comfortable. It's important that the design exceeds best practice technically but feels like a home.

MS: Can you tell us about the inspiration behind some of the design decisions?

JM: Inspiration comes from many sources. On this project we were inspired by the park, the Victorian infrastructure and the opportunity for placemaking.

MS: What's the story behind your favourite material used?

JM: My favourite material is the cast steel spandrel panels on the lower level podium buildings. The spandrel panels are a reference to the cast iron riveted bridge structure adjacent to the site. The panels are raw, heavy and beautiful. The emerging designs incorporate a range of materials, which change as the use of the spaces change. The reception spaces are inspired by high-end hotels. The apartments will feel bright, be private and will

have astonishing views. The amenity areas will feel luxurious and indulgent.

MS: What are you hoping to inspire in people with the design?

JM: We hope the design inspires a sense of community and connection to this special part of Manchester. We hope it inspires further regeneration of the surrounding areas.

MS: How would you like people to feel when they experience the development?

JM: We hope the buildings lift people's spirits, both externally from a city context and internally when living in the homes created.

MS: What has been your journey on the project?

JM: It's been frantic and quick! The site has an astonishing history. Layer upon layer of historical relevance. We researched the site and put in place a plan to repopulate the area with modern buildings, which respond to their site positively.

MS: What's the highlight of this project, from your perspective?

JM: Opening up the railway viaducts adjacent to the tower will create a new place and will allow connections through the site. The idea came about through throwing ideas around in one of our internal crit forums. We wanted to fix a problem and this design move opens up a series of placemaking opportunities. It's not often you get the chance to create powerful urban design moves like this. The new place it creates will be defined by the new glass tower and the existing Victorian viaduct. New and old.

MS: What were the hurdles to overcome?

JM: We paid special attention to the sensitive historical backdrop of the park. Creating buildings with maximum active frontage, which animated the streets on all four sides was also a challenge.

MS: What would you change?

JS: Honestly, nothing. Although a pool on top of the tower would be fun!

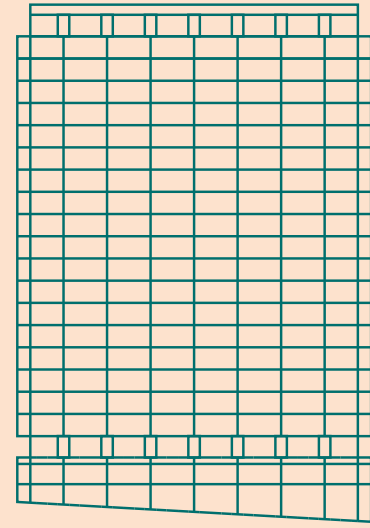


Find Out More →
5plusarchitects.com/work

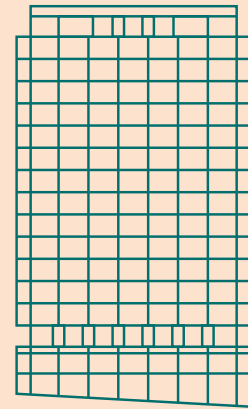
Real life living, in the city and on the edge of the park.

- 01 Angel Meadow Park
- 02 The Gate
- 03 The Stile
- 04 The Peak*
- 05 Mount Yard

02 The Gate



03 The Stile



05 Mount Yard



OVERVIEW: The Gate + The Stile

Slick glass facades up to 22 storeys high.

Sustainable, recycled and reused materials.

Designed to complement and reflect the rich colours and materials of the surrounding Victorian and Industrial architecture.

A gym, private dining, shared workspace and private communal terrace on Level 02 of The Stile.

Levels 01 to 21 of The Gate and 01 and 03 to 16 of The Stile will be residential apartments.

Penthouses on Level 21 of The Gate and Level 16 of The Stile.

Private terraces on Level 02 of The Gate and Level 01 of the Stile.

*The Peak will be released as part of Phase 2.

Please note, the development layout shown is a digital illustration only, is not to scale, and may not accurately depict elevation materials, gradients, landscaping or street furniture in the as-built development. Angel Meadows (FEC) Ltd reserves the right, in its absolute discretion, to amend the layout and specification as necessary and without notice.

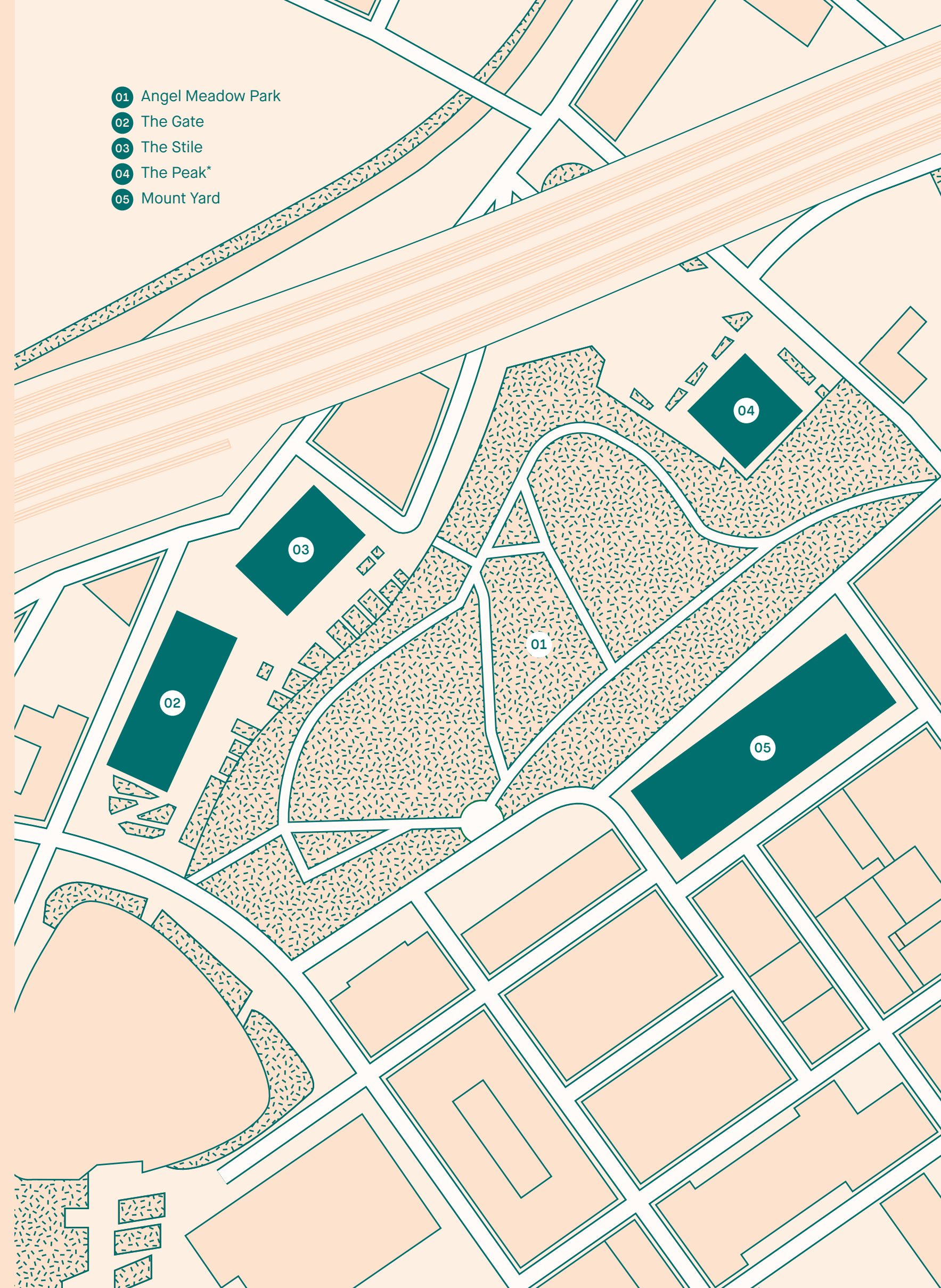
OVERVIEW: Mount Yard

A mix of apartments and 5 townhouses.

Designed to blend in with the listed buildings and surrounding warehouses.

Sustainable, recycled and reused materials.

A complement and reflection of the rich local colours and materials with a mix of Victorian and contemporary styles.





Meet the Landscape Architects

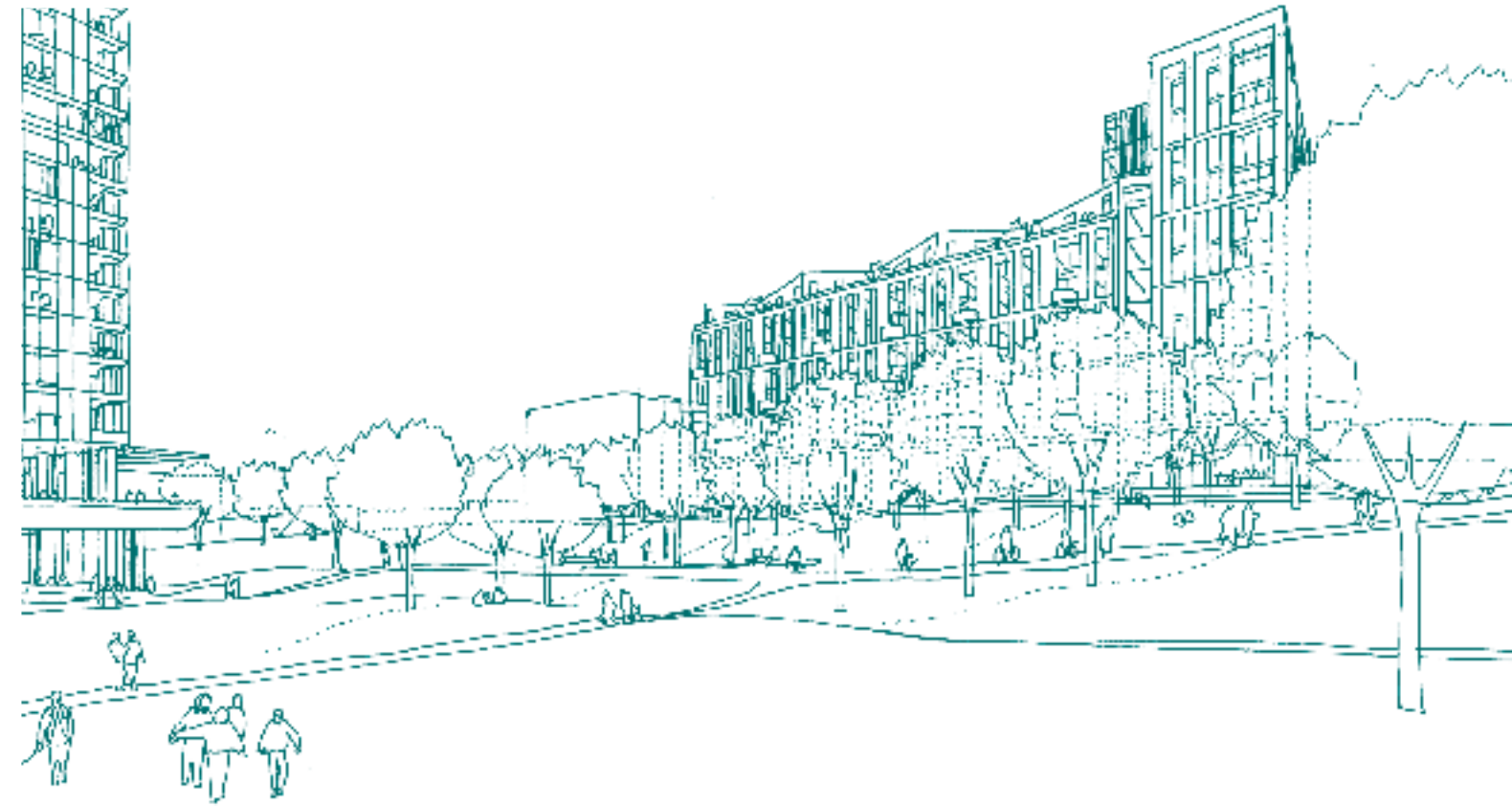
MeadowSide



Matt Stirton and Kevin Redhead
Landscape Architects at Planit-IE.
Image supplied by Planit-IE.

Manchester has got plenty of parks but none close to the core or its emerging communities. Angel Meadow is the biggest green space in the city and will open things up for the surrounding areas. It will be an outdoor home. A welcoming space. Somewhere people can gather, rest and enjoy the views.

To learn more about the new regeneration plans we talked with **Matt Stirton** and **Kevin Redhead** — Landscape Architects at Planit-IE...



Step Outside
Wide open spaces that breathe life into the city.

MeadowSide: Please introduce yourselves and tell us about the project
Planit-IE: We are Kevin and Matt from Planit-IE, Landscape Architects responsible for the design of the public realm and external spaces.
MS: What are your plans for the Angel Meadow park regeneration?
P-IE: The park has recently undergone some refurbishment so in many areas it will be a relatively light touch approach, and due to the sensitivities of the site there are limitations on any significant development within the park. The key interventions will be around the northern corner at the Gould Street entrance where we will be creating new landform terraces providing places to rest and enjoy great views over the park and Manchester's skyline. We are also creating a new stepped access that will create a new East-West connection from Old Mount Street. It's what we're doing around the park that will have the real impact and place the park within a much greater piece of public realm, which will be more inviting to a greater number of people, both those who currently live and work around

the area and also new residents who will come to live in MeadowSide.
MS: Are there any amenities being added you can tell us about?
P-IE: The most significant aspect of the project is that we are creating new high quality pedestrian routes and spaces that were previously roads and car parks. We are also going to be creating much more green space, with a series of gardens that will extend the park edge along Aspin Lane, as well as lots of new tree planting across the whole site. A new lighting scheme will make the area feel much safer and more accessible after dark, and hopefully encourage a more vibrant local night life.
MS: What excites you about this project?
P-IE: It's the story of the place and its people. It's also a fantastic opportunity to bring people back to this part of the city and we are exploring ways to narrate the history and interpretation of the site within the public realm, allowing Mancunians and visitors to find out a little more about the area's fantastic past. We are already doing this as part of the nearby

MeadowSide

“It’s what we’re doing around the park that will have the real impact.”



Communal Living

A place to call home with a hotchpotch of neighbours.

Angel Gardens project where we are telling the story of Arkwright’s Shudehill Mill through physical and digital media, and there is a clear connection between that story and the workers and people of Angel Meadow.

MS: What has been a highlight of the journey?

P-IE: So far it has been the collaboration between the team, but I’m sure there will be more highlights to come.

MS: What are the hurdles you’ve had to overcome?

P-IE: Levels and access have been a challenge due to the existing topography of the site, however this has also presented an opportunity to create a much more accessible and inclusive design for the public realm.

MS: Why do you do what you do?

P-IE: The opportunity to create public spaces for people to enjoy, what’s not to like! It’s a great feeling walking down a street or having a beer in a square or park that you have designed.

MS: Who inspires you?

P-IE: Being around creative people everyday is pretty inspiring.

MS: If you could design anything, anywhere, what would it be?

P-IE: A beach at Old Trafford.

MS: Describe Meadowside in Mancunian

P-IE: MeadowSide’s got everything except a beach.



Find Out More →
planit-ie.com

Where It’s At

pirit.

MeadowSide



“T
d
th
w
re



Find Out More
planit-ie.com

**Manchester
is a creative
force to be
reckoned with,
its booming
reputation is
only set to
get bigger.**



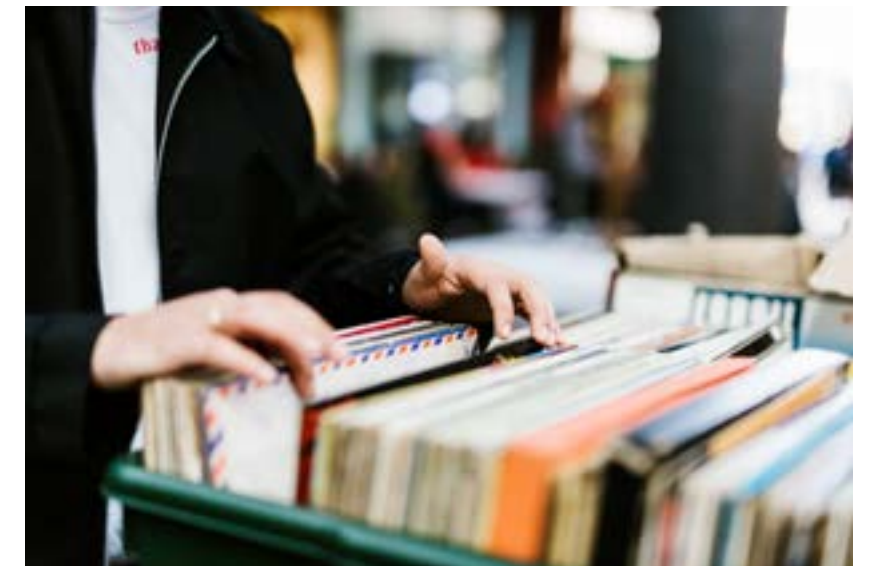
The Location



MeadowSide Living

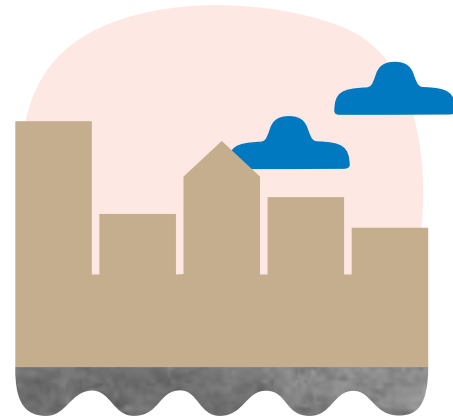
A beehive of entrepreneurship and Northern spirit.
Photograph by Eye of Ebony.

MeadowSide



“Many businesses chose Manchester because of its culture and quality of life.”

Anne Dornan, Head of Innovation at The Manchester Science Partnerships Business Centre.



A cluster of dynamic cities in the North of England. The Northern Powerhouse generates 20% of the UK's GDP and forms a super economy of £300 billion. Bigger than Taiwan, Sweden or Denmark and home to over 15 million. This urban collective has one of the largest workforces going. Known as the UK's second city, Manchester is the fastest growing regional capital. And one with its own seat of power after the recent devolution.

Leading the way and following in their footsteps.

This assertive, restless city has levels of job creation predicted to outpace cities such as Berlin, Tokyo and Paris, between 2015 and 2020*.

Manchester airport serves more destinations than any other in the UK, outside of London.

The working population is at 680,000 and the average age is 29. An inspiring call for creative and digital industries, this is home to MediaCityUK as well as a host of FTSE100 companies.

Hailed as one of the best cities to live in, Manchester is a world-class proposition for business and investment.

Top Start-Ups in Manchester

The rise of the start-up has taken root in Manchester with some of the UK's greatest success stories launching and landing on their feet here.

Boohoo

Online Fashion Retailer

Founded

2006

Investment raised

£300 million, following an IPO in 2014

Digital Bridge

Home Decor Visualisation

Founded

2013

Investment raised

£1.1 million

Peak

Data Analyst Experts

Founded

2014

Investment raised

£1 million

Market Invoice

Business Finance Intermediary

Founded

2010

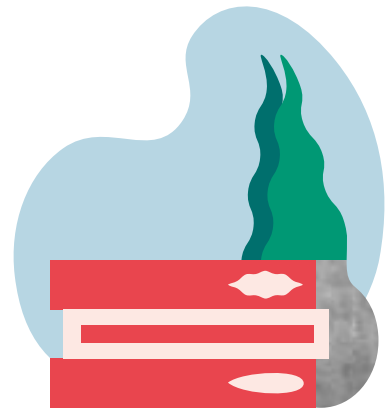
Investment raised

£26.8 million

Sourced Wired Magazine, May 2017.

*Source Beyond the City 2015, Oxford Economics

Four leading institutions in the Top 100 globally, with more than 105,000 students collectively.



Universities

The University of Manchester. Manchester Metropolitan University. The University of Salford. The University of Bolton. Four leading institutions in the Top 100 globally, with more than 105,000 students collectively. Plus another 18 universities and institutions within an hour's drive of the city. That's a lot of potential. A lot of talent. Fresh blood. And hungry minds. All ready to work and play and grow.

Around 25% of the labour pool in Manchester is educated to degree level, with streams of training and vocational courses on offer. Graduate retention is a sturdy 51%, second only to London.



— **Leading Institutions**
(Top to bottom) The Royal Northern College of Music, University of Manchester, University of Salford.

MeadowSide



“I won’t be leaving after my degree. The opportunities here are fantastic.”

Jake Stainton of Manchester Metropolitan University, The Guardian 2015.

Manchester has been where it's at for the last couple of centuries. Since the Industrial Revolution and the splitting of the first atom, it's since become the European City of Science 2016. A magnet for business, with a huge and talented workforce, it sits at the centre of 'The Northern Powerhouse'. A creative force to be reckoned with, it's booming reputation is only set to get bigger.

“As of 2016, Manchester had just under 52,000 digital-sector jobs.”

Wired Magazine, 2017.

Innovation

Where Ernest Rutherford first split the atom. Where John Dalton developed modern atomic theory. Where Rolls met Royce. Where the computer, the submarine and Graphene were all invented. Not bad for a northern city on a small island. For the last 200 years, Manchester has fuelled the Industrial Revolution and was recently titled The European City of Science 2016. Host to Europe's largest interdisciplinary science meeting, this is a future Smart City in the making.

MeadowSide



The Heart of Manchester Shopping at Oi Polloi, indulging in local eateries (photograph by Eaters Collective), catching up over cocktails, getting caffeinated, record digging at Picadilly Records.

The Northern Quarter has long been known for its independent music, arts and nightlife. Cracking cocktails flow at the likes of El Capo, Cane and Grain and Apotheca. Burgers and burritos at Luck, Lust, Liquor and Burn or a light bite at one of the sweet, self-styled cafés. The Northern Quarter calls night and day, with vintage stores, boutiques, the best brew in town and a spin of record stores.

Recently placed by The Times at number two in the 'coolest places to live', Ancoats has arrived. From Japanese tea-houses to artisan coffee shops. Stripped-back dining and pop-up street stalls. The best pizza going and the birthplace of your next craft beer.

A regeneration project of epic Northern stature, NOMA is the gateway to the Northern Quarter and MeadowSide, it connects a lively mix of neighbourhoods. The site of streetfood, live music and events. The Pilcrow Pub is the NOMA local, a proper pub built by proper people serving proper beer, 7 days a week.

Shopping

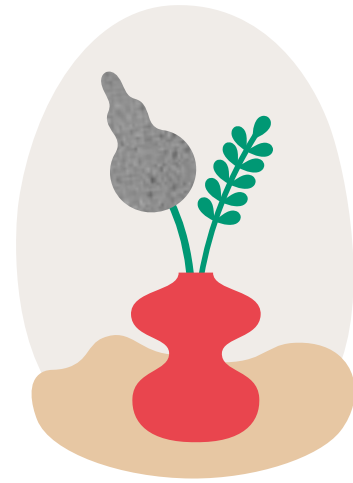
Spoilt for choice, across the spectrum. Whether you're into big brands or vintage finds. There's every possible high street name, upmarket department store and creative outlet for fashion. Louis Vuitton, Burberry and Tiffany are just a few of the big names that adorn the streets. While Selfridges sits happily next to Harvey Nichols near the Northern Quarter, Vivienne Westwood, DKNY and Armani are all in town and the Trafford Centre is a 10 minute drive out.

Eating

Eating out in Manchester can make you dizzy. From independent eateries and fine dining to pop-up restaurants and street food. Celebrity chefs have their hand in a few such Northern pies and some of the local highlights include Rudy's Neapolitan Pizza, Cottonopolis, TNQ and Tariff and Dale.

“There’s a fierce DIY ethic that allows fledgling artists to showcase their ideas and make a name for themselves.”

Johnny Sture, Common.



Culture

Strings of festivals and legendary gigs define Manchester. Live music is always around the corner and some of the finer cultural highs are never far away. The biennial Manchester International Festival, The Halle Orchestra, The BBC Philharmonic and the array of theatres, arenas and venues, draw in world-class artists from every corner of the city, country and globe. Dynamic exhibitions and classical works fill the eclectic art galleries. The Lonely Planet has put Manchester down as one of the top ten cities to visit, alongside Mumbai and Rome.

Centre For Chinese Contemporary Art

Get inspired with workshops, talks, exhibitions and residencies.



Music

Rich, diverse and known the world over for music and culture. Manchester is not short on style and soul. New music continues to sound out from the streets. With artists like the esteemed LoneLady leading the way and pop-up studios and not-for-profits shifting the rhythm of how music gets made.

“It’s extremely interconnected with producers, promoters, record labels etc all beautifully intertwined.”

Matt Ward, Piccadilly Records.



Piccadilly Records

Get lost in one of the best loved record stores.

Sport

Home to two of the world’s largest and greatest football clubs, you’ll also find Adidas, Umbro and Under Armour based here. Emirates Old Trafford, the Aquatics Centre and the National Cycling Centre are all world-class facilities and each played their part in the Commonwealth Games 2002.



National Football Museum

Where else would you find a football museum, than the home of Manchester United and Manchester City.

Top 20 Local Hotspots

Arts + Culture

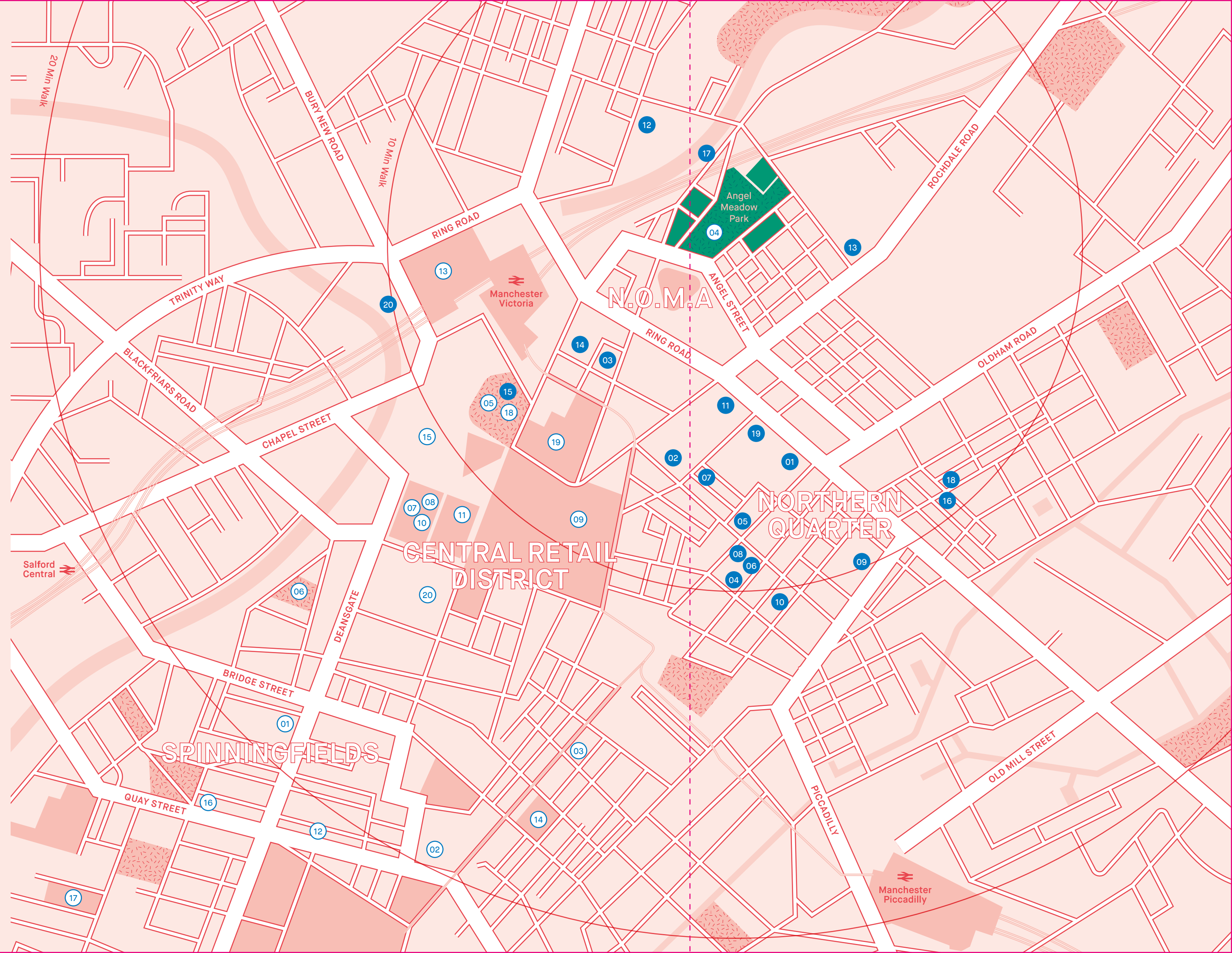
- 01 Band on the Wall**
25 Swan St.
Manchester M4 5JZ
- 02 CFCCA**
13 Thomas St.
Manchester M4 1EU
- 03 Plant NOMA**
Redfern, Dantzic St.
Manchester M60 OAE

Retail

- 04 COW Manchester**
61 Church St.
Manchester M4 1PD
- 05 Oi Polloi**
63 Thomas St.
Manchester M4 1LQ
- 06 Piccadilly Records**
53 Oldham St.
Manchester M1 1JR

Food + Drink

- 07 63 Degrees**
104 High St.
Manchester M4 1HQ
- 08 Evelyn's Café Bar**
G18, Tib St.
Manchester M4 1NB
- 09 The Fitzgerald**
11 Stevenson Sq.
Manchester M1 1DB
- 10 Foundation Coffee House**
Sevendale House, Lever St.
Manchester M1 1JB
- 11 Mackie Mayor**
Eagle St.
Manchester M4 5JZ
- 12 Manchester Three Rivers Gin**
21 Red Bank Parade
Manchester M4 4HF
- 13 The Marble Arch**
73 Rochdale Rd.
Manchester M4 4HY
- 14 The Pilcrow Pub**
Hanover St.
Manchester M60 OAB
- 15 The Rabbit in the Moon**
Corporation St.
Manchester M4 3BG
- 16 Rudy's**
9 Cotton St.
Manchester M4 5BF
- 17 The Runaway Brewery**
Unit 4 Millgate, Dantzic St.
Manchester M4 4JW
- 18 Seven Bro7hers Beerhouse**
33 Blossom St.
Manchester M4 5AF
- 19 The Smithfield Market Tavern**
37 Swan St.
Manchester M4 5JZ
- 20 Umezushi**
4 Mirabel St.
Manchester M3 1PJ



MeadowSide

Top 20 Places of Interest

Libraries

- 01 **The John Rylands Library**
150 Deansgate
Manchester M3 3EH
- 02 **Manchester Central Library**
St. Peter's Sq.
Manchester M2 5PD
- 03 **Portico Library**
57 Mosley St.
Manchester M2 3HY

Parks

- 04 **Angel Meadow**
Old Mount St.
Manchester M4 4TF
- 05 **Cathedral Gardens**
Corporation St.
Manchester M4 3BG
- 06 **Parsonage Gardens**
St Mary's Parsonage
Manchester M3 2LF

Retail

- 07 **Burberry**
21 Cathedral Approach
Manchester M1 1AD
- 08 **Harvey Nichols**
21 Cathedral Approach
Manchester M1 1AD
- 09 **Manchester Arndale**
Arndale Centre
Manchester M4 1AZ
- 10 **Paul Smith**
New Cathedral St.
Manchester M1 1AD
- 11 **Selfridges & Co**
Corporation St.
Manchester M3 1BD

Attractions

- 12 **Albert Hall Manchester**
27 Peter St.
Manchester M2 5QR
- 13 **Manchester Arena**
Hunts Bank
Manchester M3 1AR
- 14 **Manchester Art Gallery**
Mosley St.
Manchester M2 3JL
- 15 **Manchester Cathedral**
Victoria St.
Manchester M3 1SX
- 16 **Manchester Opera House**
3 Quay St.
Manchester M3 3HP
- 17 **Museum of Science And Industry**
Liverpool Rd.
Manchester M3 4FP
- 18 **National Football Museum**
Urbis Building, Todd St.
Manchester M4 3BG
- 19 **The Printworks**
27 Withy Grove
Manchester M4 2BS
- 20 **Royal Exchange Theatre**
St. Ann's Sq.
Manchester M2 7DH

The Location

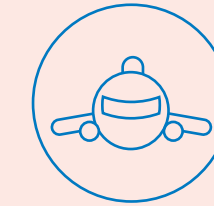
Close to Anywhere That's Anywhere

MeadowSide is surrounded by the hustle and hive of the Northern Quarter, Ancoats and the Green Quarter. The retail centre is within 1km, so it's a short walk to Selfridges, Harvey Nichols, the Arndale Centre, Corn Exchange, Royal Exchange and the Printworks and the transport links are second to none. With immediate access to key roads, stations and airports, MeadowSide is a gateway location.

MeadowSide

MeadowSide

The Location



Airports

Only a half hour drive away, Manchester International Airport is one of the UK's major hubs and connects the North of England to the globe. It's the first UK airport outside London with direct flights to mainland China.



Buses

Shudehill is less than 500m away. Its vast network of bus services runs throughout Greater Manchester. For any other bus routes, Piccadilly Gardens is only 1km away.



MetroLink

Shudehill and Victoria station are both less than 500m away. They each connect to the Metrolink system, with services throughout Manchester and Salford including Altrincham, Chorlton, Bury and Oldham. Proposed future extensions will take passengers straight to the Trafford Centre shopping mall.



Roads

Immediate access to Oldham Road (A62) means open access throughout the UK, without having to wade through the congested city centre. Great Ancoats Street (A665) is also immediately accessible and forms part of Manchester's inner ring road.



Trains

Victoria Station is less than 500m away and Piccadilly is only 1.5km away. The Ordsall Chord line will soon connect Victoria to Piccadilly. Both provide national rail services throughout Britain with direct links to major cities and London is just 2 hours away.

	Leeds	Sheffield	Liverpool	London	Newcastle
MeadowSide*	57 m	1 hr 10 m	1 hr 18 m	2 hr 25 m	2 hr 29 m

*Times calculated by fastest mode of transport.

Far East Consortium

Far East Consortium International Limited is a leading property conglomerate, listed on the Hong Kong Stock Exchange since 1972. We specialise in property development, hospitality and car parking ventures in mainland China, Hong Kong, Singapore, Australia, New Zealand and the United Kingdom, with over forty years' experience operating in Asia Pacific.

We are recognised as one of the region's most trusted developers and have delivered landmark projects throughout the world. We have an enviable reputation for delivering high quality homes and upscale standard hotels.

Our residential projects include The Fifth and West Side Place, Melbourne, The Star Residences in Gold Coast, Royal Riverside in Guangzhou, King's Manor and Royal Crest II in Shanghai, Marin Point in Hong Kong and Artra in Singapore.

Our UK operation launched in 2011 with the arrival of the Dorsett Shepherds Bush hotel.

Since then we have acquired and are actively procuring over 2.1million square foot of residentially led development from our head office in Mayfair, London, and regional office in Manchester. We are committed to delivering outstanding value homes across the UK.

With two Ritz Carlton hotels in the pipeline and 12 others under our own Dorsett Brand, the hotel side of our business is equally impressive. We currently operate 21 hotels in Hong Kong, Mainland China, the UK, Australia, Singapore and Malaysia and will soon have 35 operating hotels with more than 10,100 rooms.



— **Madison Upper West Side, Melbourne**
Four iconic towers make up one of the largest inner city developments in Australia .

An outstanding reputation for premium international developments.

— **Alpha Square, Canary Wharf**
Soaring up and out of the skyline, Alpha Square is a future landmark property for Canary Wharf.



— **Dorsett, Singapore**
A glamorous addition to Chinatown.



Find Out More → fecil.com.hk



Cushman & Wakefield
1 Marsden Street
Manchester M2 1HW
+44 (0) 161 235 8965
manchester.newhomes@cushwake.com
cushmanwakefield.co.uk



JLL
257 Deansgate
Manchester M3 4EN
+44 (0) 161 238 7400
salesmanchester@eu.jll.com
jll.com



Raeon International
Suite 1307-1309, 13/F, Leighton Centre,
77 Leighton Road, Causeway Bay, Hong Kong
+852 9168 8209
info@rae-on.com
rae-on.com



Far East Consortium
Ground Floor, 12 Stanhope Gate
London W1K 1AW
+44 (0) 20 3370 6804
info@meadowside-manchester.com
fecil.com.hk

MeadowSide

Aspin Lane, Manchester M4 4DP
info@meadowside-manchester.com
meadowside-manchester.com

All photography by Lauren Maccabee except when noted otherwise. Architects drawings by 5plus Architects.

Facts and figures sourced from Marketing Manchester tourist board.

Angel Meadows (FEC) Ltd assumes no responsibility and shall not be liable to any person for any loss, damage or expense caused by reliance on the information in this brochure. FEC Development Management are appointed development manager of MeadowSide, Aspin Lane, Manchester M4 4DP by the owner Angel Meadows (FEC) Limited (a company incorporated in England and Wales with company number 10148918).

Whilst reasonable efforts have been made to ensure that the information in this brochure is correct, it is designed specifically as a broad indicative guide only and Angel Meadows (FEC) Ltd reserves the right to amend any of the specifications at its absolute discretion as necessary and without any notice. This brochure does not in any way constitute or form any part of a contract for sale, transfer or lease nor does it constitute a representation or otherwise form the basis of a contract. Photography taken at similar Angel Meadows (FEC) Ltd developments and computer-generated images (CGIs) are indicative only and should not be relied upon as depicting the final as built development or apartment. Prospective purchasers should satisfy themselves regarding the accuracy of the information provided in this brochure. No assumption should be made regarding any part or the whole of any plot or the estate not shown in the brochure. October 2017.

Branding and design by: **Don't Panic Partners**



**Far East
Consortium**

meadowside-manchester.com